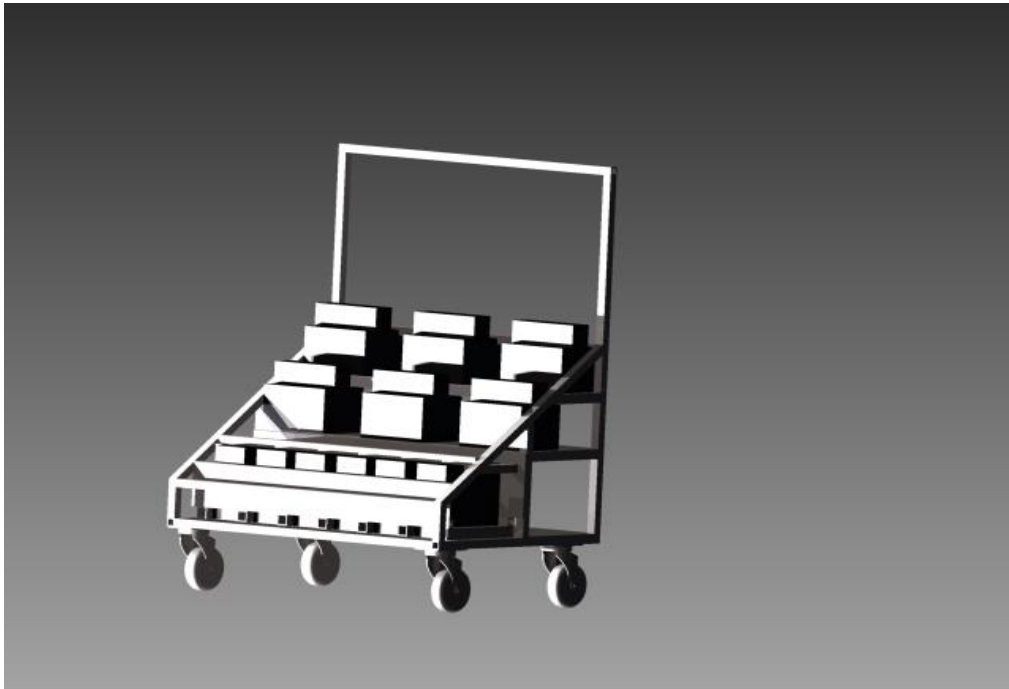




Presents

Our battery cart

Included in this tutorial is a full cut list, 3 assembly drawings and a parts list with links.



The cut list contains the CAD files named:

- cut a
- cut b
- cut c
- cut d

The CAD file Assemblies contain files named:

- side a
- mid

- base
- handle

In the folder you will find a video of the cart being assembled, you will also find a parts list and a CAD file.

You will make two “side a” assemblies and put “mid” assembly between the two. Then the base is welded on to that assembly. Then the removable handle is slid in on the top.

Here are some pictures of our battery cart:

Top view:



As you can see from the top & front the batteries and battery chargers are accessible, easy to use, and visible.

Side view:



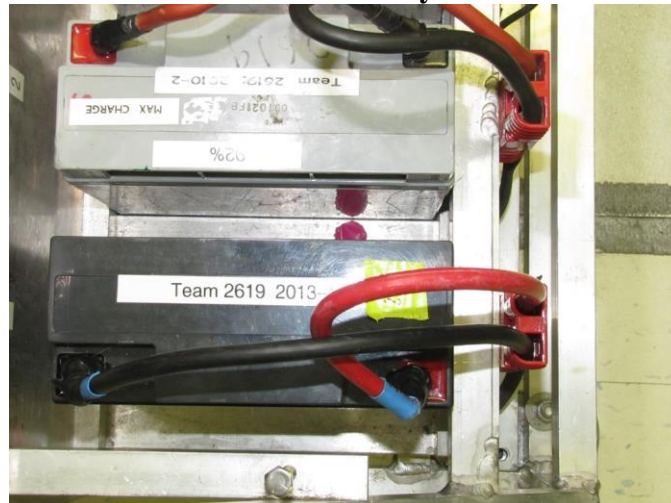
From the side can see how the batteries and battery charges stack in a stair step configurations.

Back view:



From the back you can see how all the battery chargers plug into one power strip witch plugs into a outlet.

Wired battery:



From this picture that each of the six batteries plug into a fixed connector from the top, the wires to the chargers are neatly routed through the tubing.